

WATERS *Therapy***Shower**

Manual

Health & Beauty Shower

The Waters Therapy Shower revitalizes Body & Soul.



Waters

Made in Korea

Waters Therapy Shower

Beautifying body and soul..

Waters Therapy Shower

WATERS
Therapy Shower



Waters Therapy Shower?

Enjoy cleaning your body & mind at the same time! The Therapy shower is a new concept in shower filters. Designed to help you cope with the stressors of modern day society.

Table of Contents

· Product Functionst	3
· Name and Composition of Units	5
· Composition table table of the Cartridge	5
· How to install the product	6
· How to replace the cartridge	8
· Method to clean and replace miro pad	9
· Caution	10
· Caution During Use and How to Store the Cartridge	11
· DIY Methods in case of malfunction	12

Waters Therapy Shower

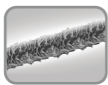
What are the functions of waters Therapy Shower?

1. Prevention of skin damage from residual chlorine

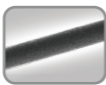
Eliminates residual chlorine and other harmful chlorine compounds, thus preventing skin damage. Test for residual chlorine elimination of Waters Therapy Shower

2. Prevention of Hair Damage and Baldness

Softens hair and is effective in preventing hair damage and baldness from residual chlorine.



<Damaged hair by residual chlorine>



<Healthy hair>



3. Benefits and Results of Collagen

Collagen is effective in creating beautiful skin by increasing the elasticity and firmness of the skin.

Efficacy, Effect of Collagen

1. Protects skin from ultraviolet rays and prevents chloasma, freckles.
2. Prevents wrinkles.
3. Improves elasticity of the skin.
4. plays a role as the source of humidity to protects skin from drying
5. Prevents skin aging.



4. Creates Magnetic Water

Water that has passed through the strong magnetic field of Waters Therapy Shower turns into a quickly-absorbed functional water because of its shrunken water molecule clusters.

5. Softens Water.

Softens water and allows a more pleasurable shower.

Waters Therapy Shower

6. Skin's Nutrient, Vitamin C

Waters Therapy Shower continually supplies Vitamin C, therefore is effective in preventing skin aging and for skin protection.

Vitamin C

The advantages of Why Vitamin C for skin

- 1. Anti-oxidizing actions** - as this action eliminates the active oxygen harmful to a body, it is useful for preventing aging and recovering from fatigue.
- 2. Synthesis of collagen** - collagen prevents aging and wrinkling of the skin, maintaining its elasticity and facilitating fast recovery of skin damages.
- 3. Skin protection from ultraviolet rays** - protects skin from harmful ultraviolet rays, controls melanic pigment, and prevents skin aging, chloasma, freckles.
- 4. A human body discharges the amount of vitamin C** - unnecessary for the interior of body, so the amount of vitamin C absorbed by taking can not influence over skin. For skin care, the best way is to apply Vitamin C.

7. Aroma Therapy

Aromatic scents relieve the mind, decrease stresses and are effective in recovery from fatigue.



waters
aroma therapy

Efficacy and effect of aroma therapy

- 1. Outstanding nervous tranquilization**
 - Relieves tension and prevents diseases from stress.
- 2. Excellent skin beautification**
 - Directly transfers the natural vitality of plant to the skin.
- 3. Cleansing and filling atmosphere with fragrance**
 - Removes various odors basically.
- 4. Pleasing and activating body function.**

What are the functions of waters Therapy Shower Head?

1. Effects of Negative Ions

New concept of a plate for sprinkle equipped in the shower head produces negative ions a lot more than forestland, so you can get the same results of walking through the woods at your home.

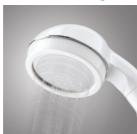
2. Removing small particles and impurities

A filter equipped in shower head protects your skin by removing small particles and impurities such as scale and rusts, and enable you to take shower with cleaner water.

3. Powerful yet soft Massage Effect

A new plate technology in shower head creates a powerful and soft massaging effect without the abrasiveness of other massaging shower heads.

4. water saving and the increase of water pressure Function

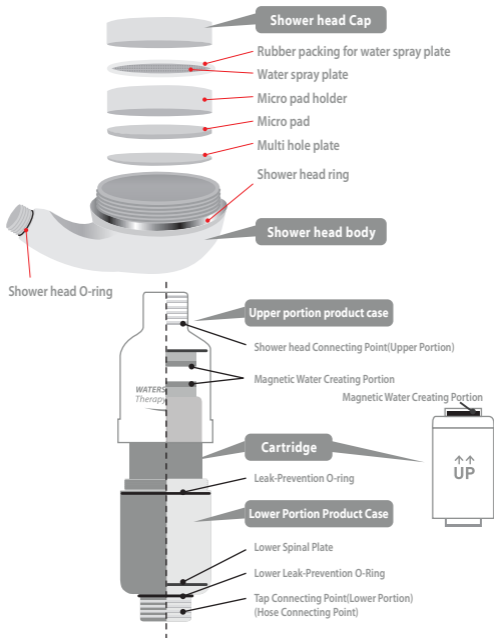


Designed specifically to be more environmentally responsible. The Therapy shower head uses around 50% less water than conventional shower heads. Added benefits to the design are increased water pressure to create a strong water flow, even in homes with a low water pressure.



Waters Therapy Shower

Name and Composition of Units



Composition table of the Cartridge

Item	ANALYSIS	CAS Number	Percentage of raw materials	Function
1	Vitamin C	50 - 81 - 7	57.2 %	Antioxidants
2	Essential Oil	N/A	28.4 %	
3	Water	N/A	7.2 %	Solvent
4	Collagen	73049 - 73 - 7	7.2 %	
Total			100 %	

Dilution Rate : 6.5mg/liter

Waters Therapy Shower

How to install the product

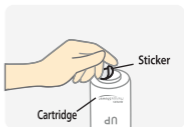
STEP 1

Before installing the product, disassemble the mid-connecting point of the product and take out the cartridge placed inside the product.



STEP 2

Remove the sticker placed under the lower portion of the cartridge as shown in the image.



STEP 3

Assemble the product as shown in the image. The cartridge with its sticker removed is placed on the lower portion of the product. Here, there may be a pushing effect by self-magnetism, but this means that the product has been assembled properly.



Assemble so that there are no leaks after making sure that the leak-preventive O-ring has been placed properly in the mid-connecting point.

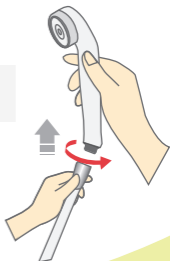
STEP 4

Disassemble your current showerhead as shown in the image.

➔ Here, make sure that the O-ring of your showerhead does not get lost.



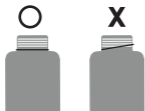
In the case of difficulty, it is easier if held and twisted using rubber gloves or other utility tools.



Waters Therapy Shower

STEP 5

Connect the lower portion of the product with the hose that has been separated from the regular shower head..



Double check that the leak-prevention O-ring has been placed properly.

After making sure that the O-ring connected on the connecting point of the tap, connect, and after connection make sure that the O-ring does not poke out of the connecting portion.



STEP 6

Connect the upper part of the shower head connecting point with the separated shower head as shown in the image.



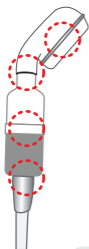
Caution!

- Make sure that the O-ring of the shower head has been placed properly.
- Make sure that the O-ring does not stick out of the connecting point of the portion after assembly.



STEP 7

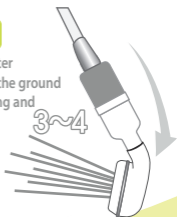
Open your tap and check whether there is a leak in the indicated parts. If there is, double check whether the O-rings of the points have been placed properly, and reassemble.



STEP 8

Before using the product for the first time after installation, point the shower head towards the ground as shown in the image and repeat the opening and closing of the tap 3~4 times.

This is only necessary once after installation or cartridge replacement.



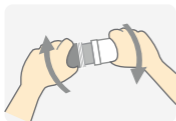
Waters Therapy Shower

When to replace your cartridge

1. When there are no more aromatic scents when using the product.
2. When you can smell residual chlorine during use.
3. when you find residual chlorine during a reagent test.



How to replace the cartridge



STEP 1

Disconnect the mid-connecting point of the product and remove the dead cartridge.

STEP 2

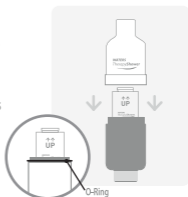
Remove the lower-portion sticker of the newly brought-out cartridge.



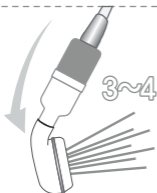
STEP 3

Like during installation, make sure that the lower portion of the cartridge is in place with the lower portion of the product. Here, there may be a pushing effect by self-magnetism, but this means that the product has been assembled properly.

Assemble so that there are no leaks after making sure that the leak-preventive O-ring has been placed properly in the mid-connecting point.



※ Replace the old O-Ring with the new O-Ring that is served with the replacement cartridge.



STEP 4

Before using the product for first time after cartridge replacement, point the shower head towards the ground as shown in the image and repeat the opening and closing of the tap 3~4 times.

This is only necessary once after cartridge

Waters Therapy Shower

Method to clean and replace micro pad

Waters therapy head installs a micro pad filter to remove impurities like rust remnant. We recommend to clean or replace micro pad when water does not com out smoothly or rusty water comes out.



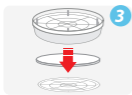
STEP 1

Separate shower cap like the picture.
<In the case of difficulty, it is easier if held and twisted using rubber gloves or other utility tools>



STEP 2

Take out micro pad holder in shower head like the picture.



STEP 3

Take out internal micro pad after separating the multi-hole plate of cartridge.



STEP 4

Clean micro pad in the flowing water. Replace micro pad with a new one when severe contamination is found.



STEP 5

Joint clean micro pad after inserting it into micro pad holder like the picture.



STEP 6

Install micro pad holder in rhe inside of head like the picture.



STEP 7

Put water spray plate like the picture



Caution –

Be careful of the direction of micro pad holder not to direct to opposite side.

STEP 8

joint shower cap like the 1 picture.

Waters Therapy **Shower**

Caution



Be careful of the front and rear side of water spray plate not to be reversed.



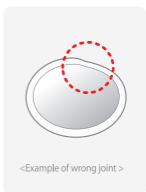
<Example of good joint>



<Example of wrong joint>



Be careful of the direction of rubber packing jointed to water spray plate.



<Example of wrong joint >



Confirm whether the rubber packing of water spray plate is well jointed.

Confirm whether the rubble packing of water spray plate is well jointed.



Caution During Use

Do not use toothpaste, thinner, or clean with a loofah.

Be careful not to create flaws at the time to clean water spray plate.

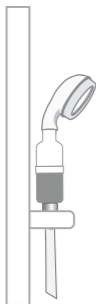
Be careful not to cut your hand from water spray plate

Do not apply extremely hot heat or pressure on the product. Also, do not freeze. (The connecting point of the shower head may get damaged.)

Waters Therapy **Shower**

Caution During Use and How to Store the Cartridge

- ↪ The life of Waters Therapy Shower may vary on the methods of use.
- ↪ Do not apply extremely hot heat or pressure on the product. Also, do not freeze. (The connecting point of the shower head may get damaged.)
- ↪ Do not let water hotter than 50 degrees to pass through.



- ↪ If you feel any abnormalities to your skin, etc., stop use immediately and seek help from a doctor.
- ↪ Do not use toothpaste, thinner, or clean with a loofah.
- ↪ Place the product on the shower head hanger as much as possible.

- ↪ Do not take out the cartridge frequently during use. (The interior minerals may get exposed and decrease the life of the cartridge.)

- ↪ Waters Therapy Shower is for shower heads only. Do not connect it to tap as shown in the photo.



- ↪ Refill cartridges must be stores in a cool place away from sunlight.
- ↪ Take care not to drink the residual chlorine testing liquid, or have it touch your body such as the eyes or the skin. Also, keep away from children.

Waters Therapy **Shower**

DIY Methods in case of malfunction



The water smells like residual chlorine instead of having an aromatic scent.



Double check to see whether you followed the instructions in the manual. (Especially, double check whether you opened and closed the tap 3-4 times with the shower head facing the ground in initial use.)



The residual chlorine is still there.

When there is too much water or the level of residual chlorine is too high, it may not be removed perfectly.
Decrease the amount of water flow when in use.

Remove the function control cap in the lower portion of the cartridge.



There is a leak between the Waters Therapy Shower shower head and the tap.



Double check whether the O ring is in place. (There may be a leak if the connecting part is extraneously tightened, or loosened.)

Waters Therapy Shower is composed of standard screws, so there may be a leak if your shower head or hose is not of standard sizes.

Waters Therapy **Shower**

DIY Methods in case of malfunction



The direction of water spray is not certain and the small holes in water spray plate are blocked with dusts(soil, impurities)



- Block the surrounding of holes in the water spray plate that sprays water to other direction while water is coming out from shower.
- If the above method is not effective, turn off the shower and turn on water directly to water spray from tap and clean it.
- In case, this method is not effective either, open cap first, then take out water spray plate and clean it using a toothbrush, etc.

Be careful not to cut your hand from water spray plate.



Water does not come out well or rusty water comes out

- Confirm whether water spray plate is blocked with impurities such as dust. In case, water spray plate is blocked with impurities, clean it with a toothbrush, etc.
- Confirm whether the micro pad in the shower head is blocked. If it is blocked, clean micro pad using the flowing water. If it is severely contaminated, replace micro pad with a new one



There is a leak between the Waters Therapy Shower head and the tap.

- Double check whether the O ring is in place.
(There may be a leak if the connecting part is extraneously tightened, or loosened.) Waters Therapy Shower head is composed of standard screws, so there may be a leak if your water hose is not of standard sizes.

Warranty for Waters Therapy Shower

Model No.	W T S - 1 0 0 2		
Name of Product	Waters Therapy Shower		
Warranty period	12 months from the date of purchase.		
Purchase date	20	year	month date
Customer Information	Address		
	Name		
	Telephone		

1. If broken within the term of guaranteed time as listed in the manual, repairs are free of charge. When requesting a free repair, please apply at the retail store the product was purchased from along with your product and this warranty.
2. In the case of an inability to receive free repairs from the retail store listed in this warranty for reasons such as gift, please contact customer service.
3. In the case of the following, repairs will be charged by rule even within the time of guarantee.
 - (1) Accident during use, insufficient repair, failure or damage from renovation
 - (2) Failure or damage from movement, postage, or fall of attached place after purchase
 - (3) Failure or damage from disasters such as fire, earthquake, flood, lightning, etc
 - (4) Failure or damage from use outside a regular home(example:business use)
 - (5) Without a proper indication of year, month, date or purchase, name of customer, and name of retail store, or when the above had been modified.
4. This warranty is only valid in Korea.
5. This warranty guarantees free repairs under the time and conditions listed in this document.



Customer Service: 080-493-1000

Hours of Operation: 10:00 ~ 16:00 (Except Saturdays, Sundays, and national holidays)

Corporation Waters

(Manhattan Building 8th fl.) 33, Gukjegeumyung-ro 6-gil, Yeongdeungpo-gu, 150-749 Seoul Korea

Memo



WATERS *Therapy Shower*

Material	Polycarbonate
Country of Origin	Made in Korea
Model Name	WTS-1002
Weight	251g
Size	225mm(H) X 45(∅)
Cartridge Lifespan	10,000 liters
Temperature	Heat-Resistant : 80°C/Cold-Resistant : -5°C

