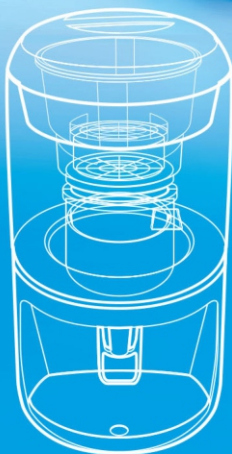




NEW BMP 1000

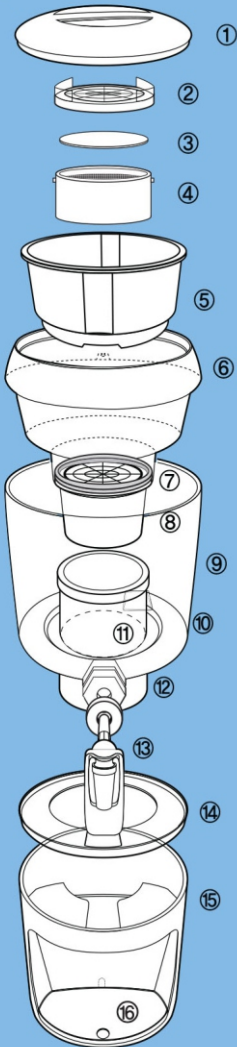
INSTRUCTION MANUAL

"Drink water
as nature intended"



Structure

A

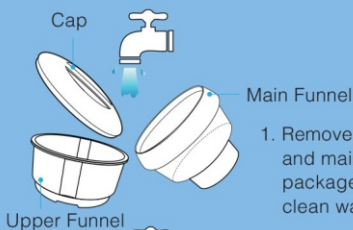


- ① Cap
- ② Upper(1st stage) filter Cover
- ③ Micro Pad
- ④ Upper(1st stage) filter
- ⑤ Upper Funnel
- ⑥ Main Funnel
- ⑦ O-Ring
- ⑧ Main Filter
- ⑨ Glass Pot
- ⑩ Somelite Bag
- ⑪ Bio Ceramic Filter
- ⑫ Magnet Outlet
- ⑬ Faucet
- ⑭ Pot Base Cover
- ⑮ Pot Base
- ⑯ Water Drip Pan

How to assemble and use

B

How to rinse the product parts and how to wash the filters



1. Remove the cap, upper funnel, and main funnel from the product package box, and rinse them with clean water.



2. Rinse the glass pot with the clean water as shown on the left picture.



3. Take out the filters from the filter set box - 1pc each of upper(1st stage)filter, main filter, bio ceramic filter and somelite bag, and soak them in the water container for about 1 hour.

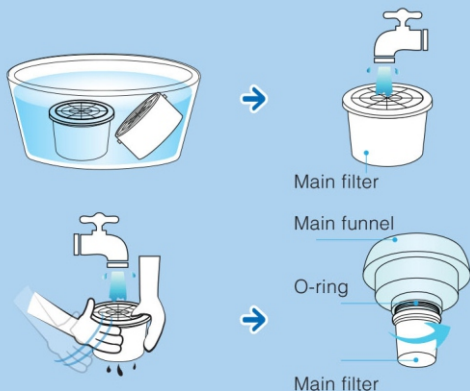


4. After 1 hour soaking, take out the bio ceramic filter and somelite bag from the water container and wash them under the tap cold only. Then place the bio ceramic filter in the bottom of the glass pot. Please make sure that the bio ceramic filter is located in the centre of glass pot. Then place the somelite bag in the in the bottom of the glass pot as shown.

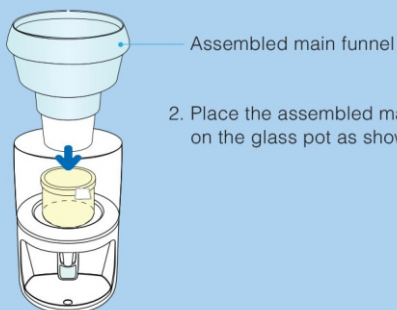
How to assemble and use

C

How to install the filters



1. After 1 hour of soaking, take out the main filter from the water container, then flush water through the filter until no black or white small particles is present. (Tapping the filter from side to side may help to flush the filter more thoroughly). Then install the main funnel as shown. Please check if the rubber ring (O-ring) of main filter is properly installed. This may cause a leak.

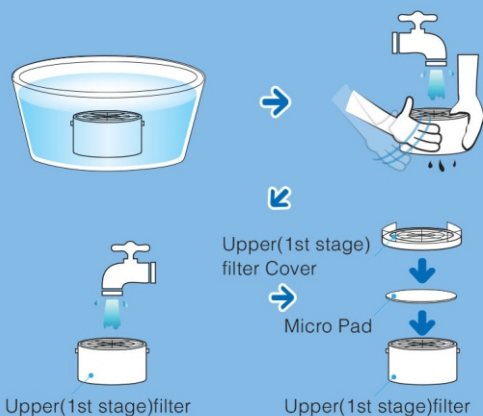


2. Place the assembled main funnel on the glass pot as shown.

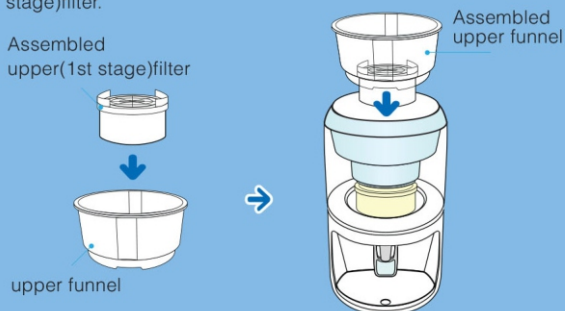
How to assemble and use

C

How to install the filters



3. Soak for 1 hour, then remove the upper(1st stage)filter from the water container and flush water through the upper(1st stage) filter until no black or white small particles come out from the filter. Then place the micro pad on the upper(1st stage)filter, assemble the upper(1st stage)filter to the upper(1st stage)filter cover as shown. Please make sure that the micro pad is properly placed between the upper(1st stage)filter cover and the upper(1st stage)filter.

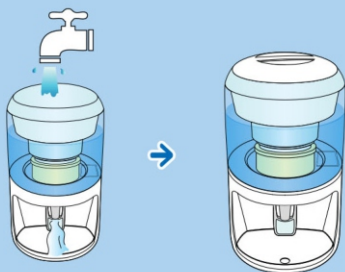


4. Install the upper(1st stage)filter to the upper funnel as shown.
5. Place the upper funnel inside the main funnel as shown.

How to assemble and use

C

How to install the filters



Finally, rinse the entire NEW BMP 1000 by filling to full pots of tap water. Empty the water out through the faucet. Then the NEW BMP 1000 is ready for use.

D

How to replace the upper(1st stage)filter and micro pad.

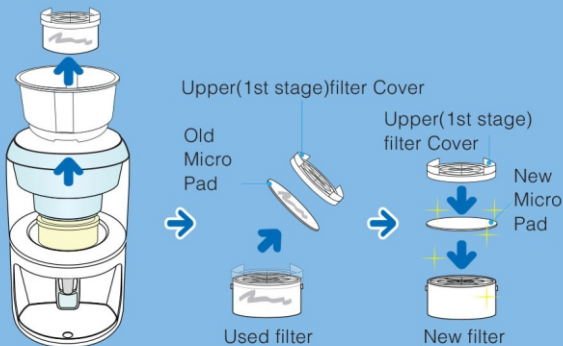


1. Take out 1 pc of new upper(1st stage)filters from the filter set box. Then soak in the water container for about 1 hour.
2. After 1 hour of soaking, remove the upper(1st stage)filter from the water container, then wash the upper(1st stage)filter by flushing water through the filter until no black or white small particles come out.(Tapping the side of filter may help to eliminate particles quicker. Also remember tap lightly).

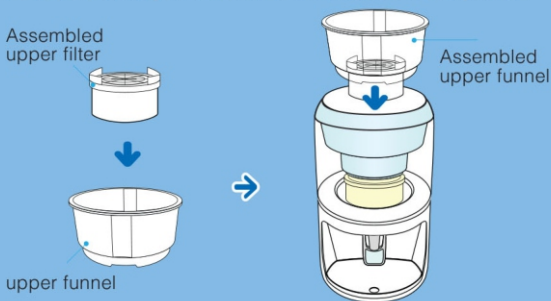
How to replace the filter

D

How to replace the upper(1st stage)filter and micro pad.



3. As shown above, take out the assembled upper funnel from the main funnel. Then remove the upper(1st stage)filter from the upper funnel.
4. Remove upper(1st stage)filter cover from the used upper(1st stage)filter. Dispose of the used upper(1st stage)filter and used micro pad.
5. Place the new micro pad on the new upper(1st stage)filter, then assemble the upper(1st stage)filter cover to the new upper(1st stage)filter as shown, then run under the tap cold only. Please make sure that the micro pad is properly placed between the upper(1st stage)filter cover and the upper(1st stage)filter.



6. Then Install the upper(1st stage)filter to the upper funnel as shown.
7. Place the upper funnel inside the main funnel as shown.

Important Reminders

1. Be sure to replace the filters as directed by your supplier or agent.
2. Do not leave the product near fire, stove, heat, etc.
3. Be sure to use only tap water. Do not use hot water or beverages.
4. Water from wells is not recommended for NEW BMP 1000.
This may shorten lifespan.
5. Do not store the filtered water in aluminum ware or copper ware.
6. Glass Pot is fragile.
7. It is recommended to clean the Glass Pot every three months.
8. Keep the product clean.
9. Keep the bio ceramic filter and main mineral filter submerged in water.

Specification

Model	NEW BMP 1000	
Height	520mm	
Diameter	290mm	
Weight	7 kg	
Glass Reservoir	11 liters	
Material	Pollution-free material	
Name of filter	Quantity	Lifespan of filter
Upper(1st stage)filter	4pcs.	6 months / each pc
Main Filter	1pc.	24 months
Bio Ceramic Filter	1pc.	Replacement is not required unless broken
Somelite Bag	1pc.	24 months
Micro Pad	4pcs.	6 months / each pc

The recommended filter capacity and the recommended lifespan of filter parts Stated above serve as a guide only. To ensure water quality, it is recommended to Replace filters as mentioned above. However, lifespan of the filter parts is subject to quality of water used.

Waters Co., Ltd.

YOUIDO DEPT. BLDG.,36-2 YOUIDO-DONG YOUNGDEUNGPO-KU SEOUL, KOREA

Tel:(82)2-827-0631 Fax:(82)2-827-0634

www.waters.co.kr